

RETRAX PRO™

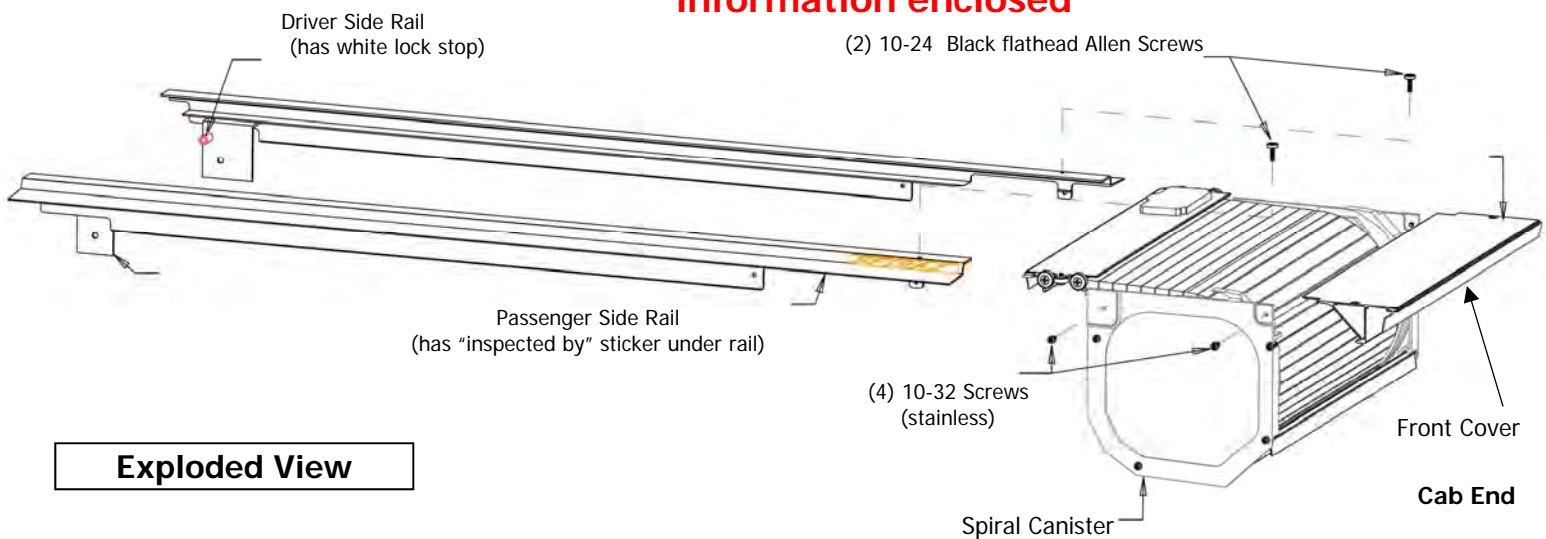
#4050 - Honda Ridgeline

Installation Instructions

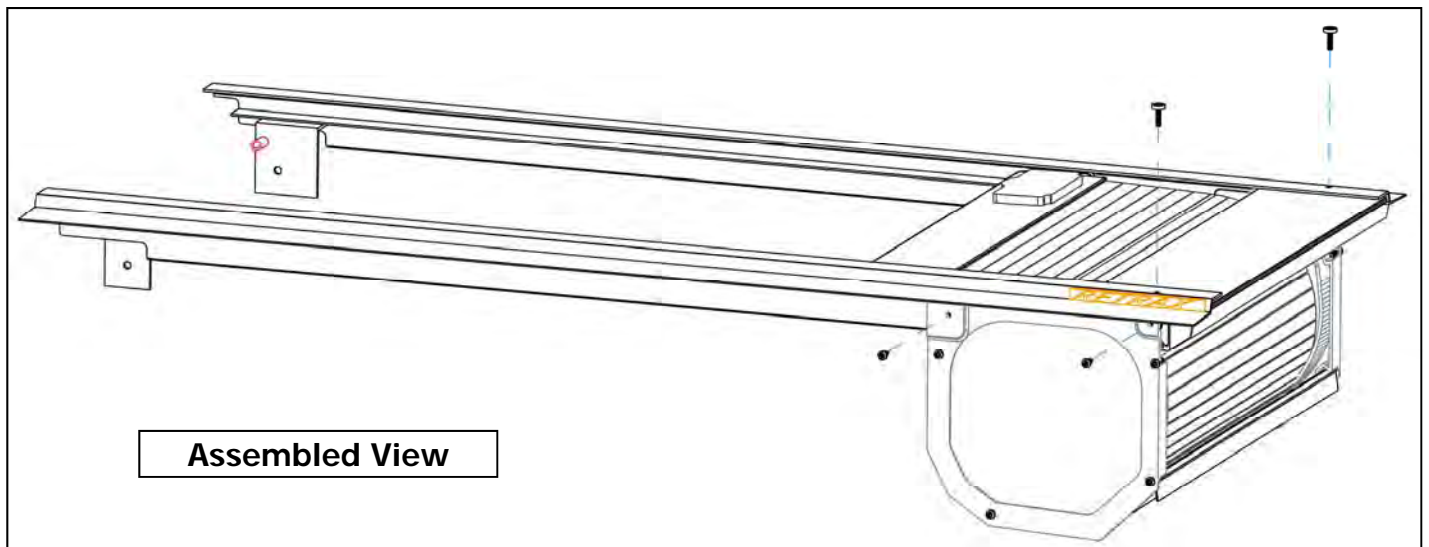
Owner's Manual



**Please save Instructions:
Important Warranty and Maintenance
information enclosed**



Exploded View



Manufactured in the USA by
APPLIED PRODUCTS, INC.
An Employee Owned Company
917 South 46th Street
Grand Forks, ND 58201
(701) 746-5596 FAX (701) 746-5598
www.rolltopcover.com
retrax@retrax.com
800-206-4070

Scan here to view a brief video
on how to install a
RETRAX cover.

Make sure that you have a
QR Code reader application
installed on your smartphone.



Thank you for your purchase of the **RETRAX™** bed cover system. Please read and follow instructions before un-boxing and assembling the bed cover. The **RETRAX™** bed cover is shipped in two boxes. Check for shipping damage and keep boxes and packing until installation is complete.

If you have any questions or concerns please contact Customer Service@
 Voice: 1-800-206-4070 Fax: 1-701-746-5598 or E-mail: retrax@retrax.com

Remove foam wrapping carefully from parts to prevent scratching. Leave clear plastic protective film on the rolling cover and aluminum canister until installation is complete. **Remove protective film before exposing to sunlight.**

Parts checklist for large box

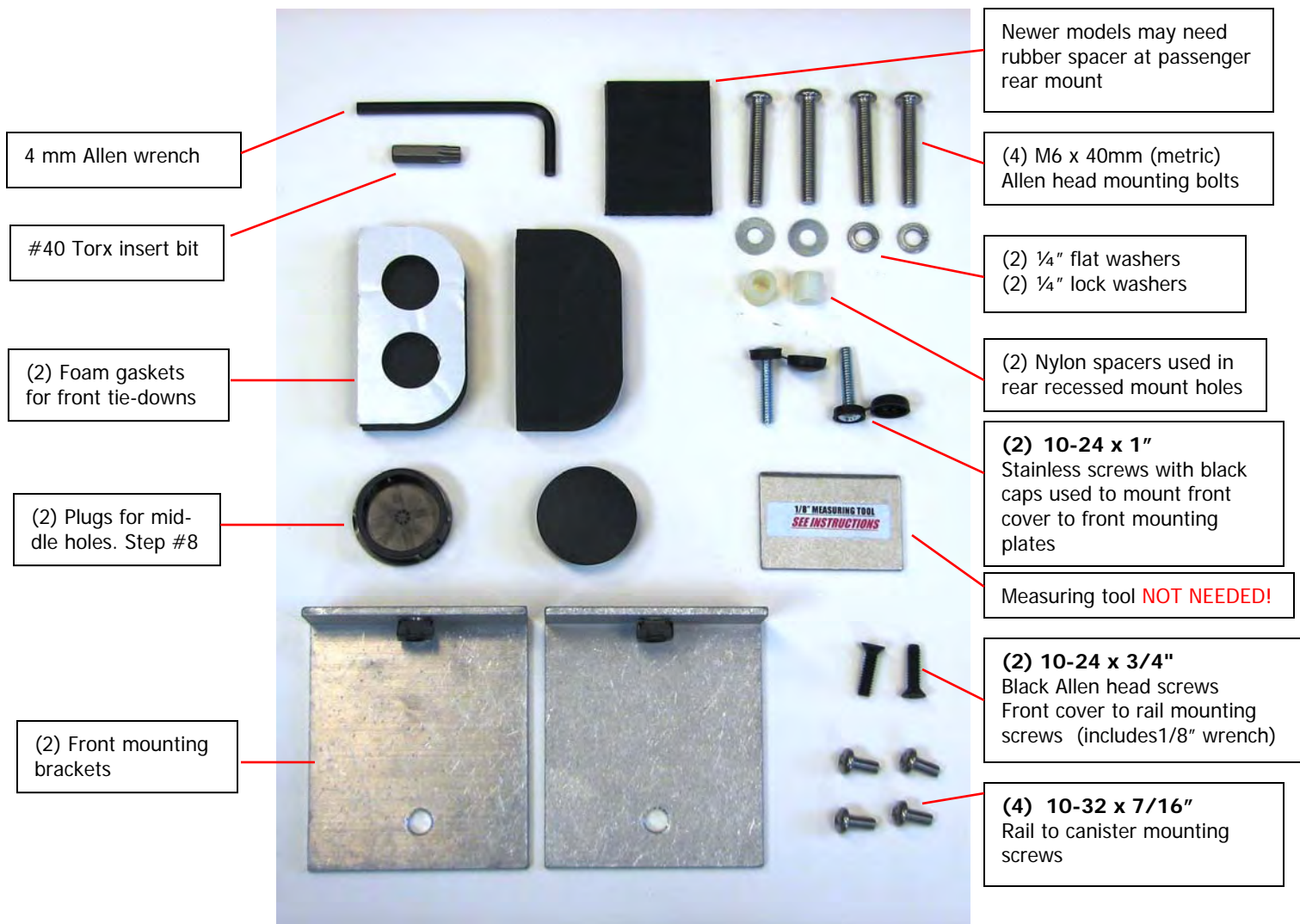
- Owner's packet with keys ----Cover rolled into canister-spiral assembly -- Front cover for canister ---Drain Tube Kit

Parts checklist for rail box

- Driver's side rail---Passenger side rail---Mounting hardware box

Drain tube kit (not shown)
 (2) Clear tubes w/ drain fittings
 (2) Foam washers

DO NOT USE LOCTITE!
USE OF LOCTITE
VOIDS WARRANTY



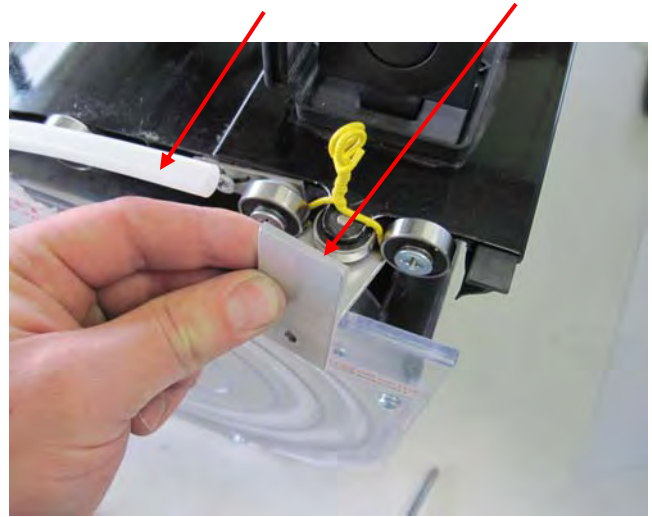
Pre-assembly guidelines

- Two people are recommended for installation and you should allow 1 to 1 1/2 hours to complete.
- Floor space about the size of pickup box is needed for assembly of the bed cover and rails.
- (2) 1/2" drain tubes connect to the bottom of canister and can exit out the floor or front of the pickup bed. The front floor of the Honda Ridgeline has two plugs covering the bed mounting bolts. Drill a loose 1/2" or a 9/16" hole through these plugs for the drain tubes. See Step 15 (Water will drain around those bolts.)

STEP 1 Remove the shipping bracket and yellow wire. Completely remove white shipping tubes.

Shipping tube Shipping bracket
Remove these items only!

The shipping brackets can be disassembled simply by removal of the 10-32 screws fastened to each side of the canister (**Remove these items only**). The tail-gate can then be lifted away from the canister allowing for the removal of the shipping bracket by sliding the T-channel out from the wire ties. The wire ties can then be removed from the bearings without the need for cutting the wire. Pull white shipping tubes completely out of the canister.



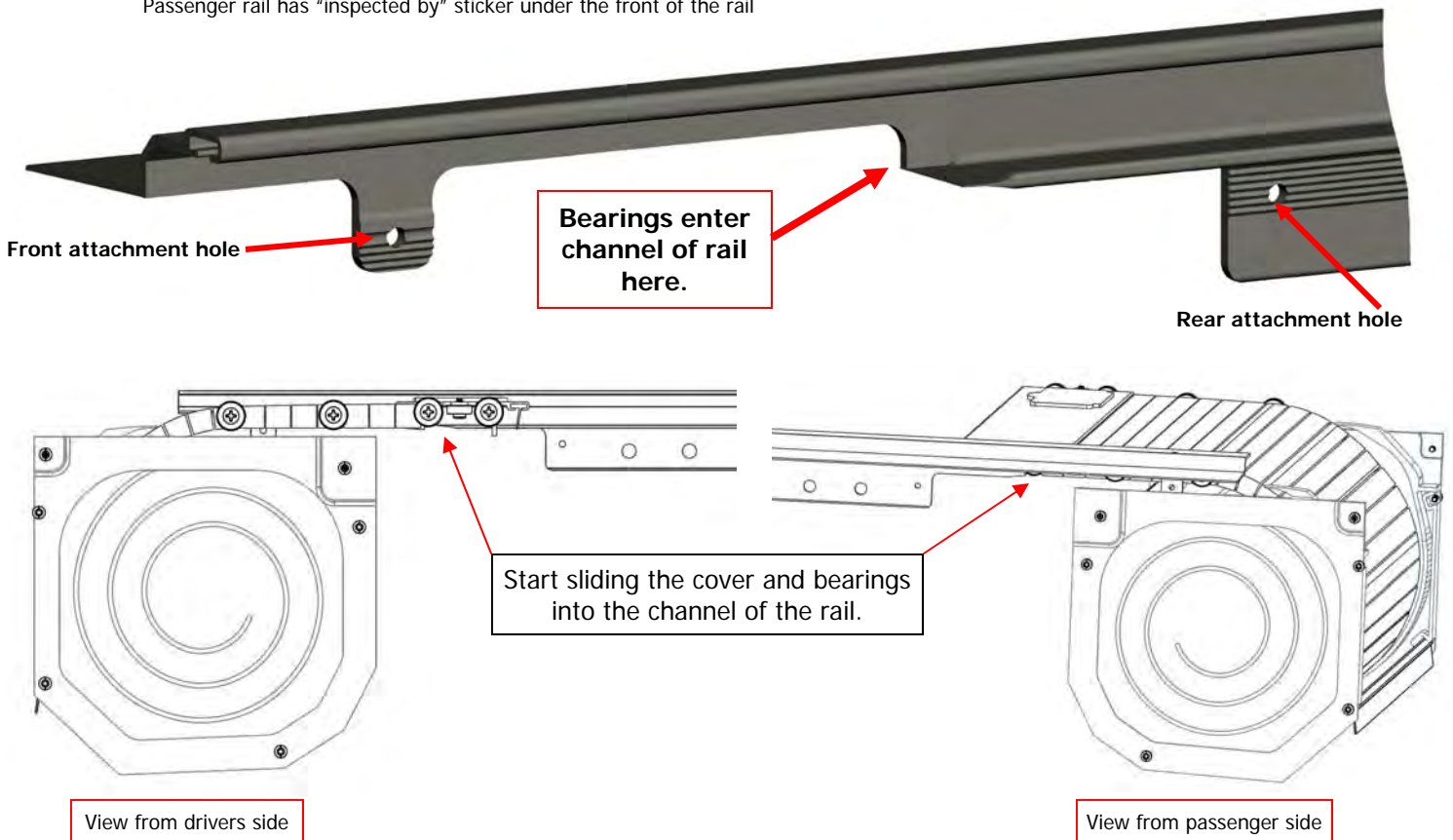
Driver side view of assembly

DO NOT ALLOW THE COVER TO ROLL INTO THE SPIRAL BECAUSE THE BOTTOM OF THE LOCK CAN DAMAGE THE COVER!

The rails will be attached to the cover assembly next. The front (cab) ends of the rails have the RETRAX decal attached. The passenger rail is the first to be installed, it has an "inspected by" decal under the front. The **driver's** rail has a white nylon lock stop attached to the bracket at the rear (tailgate) end of the rail.

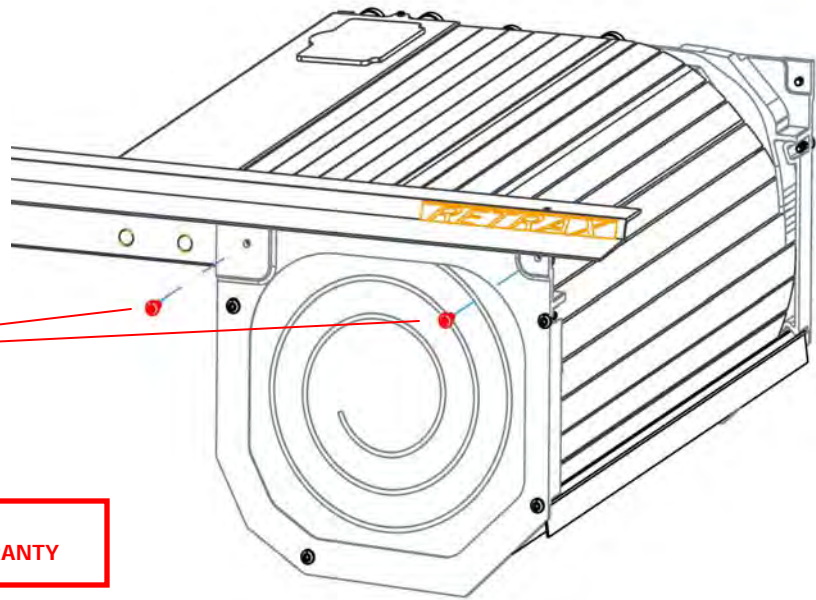
STEP 2 Install the passenger rail to the spiral.

Passenger rail has "inspected by" sticker under the front of the rail



STEP 2 continued.

Slide the rail over the cover until the two threaded holes in the rail are lined up **behind** the two holes in the spiral. Attach using two of the **10-32 by 7/16" screws**. **Tighten** using a manual #2 Phillips screwdriver.

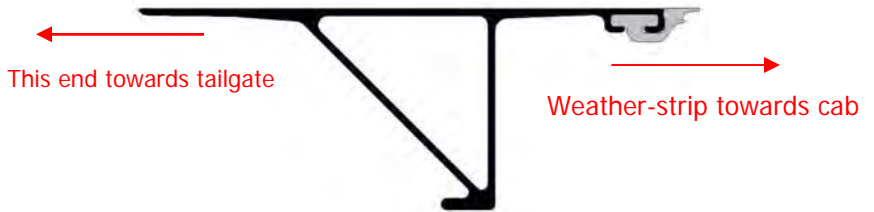


DO NOT USE LOCTITE!
USE OF LOCTITE VOIDS WARRANTY

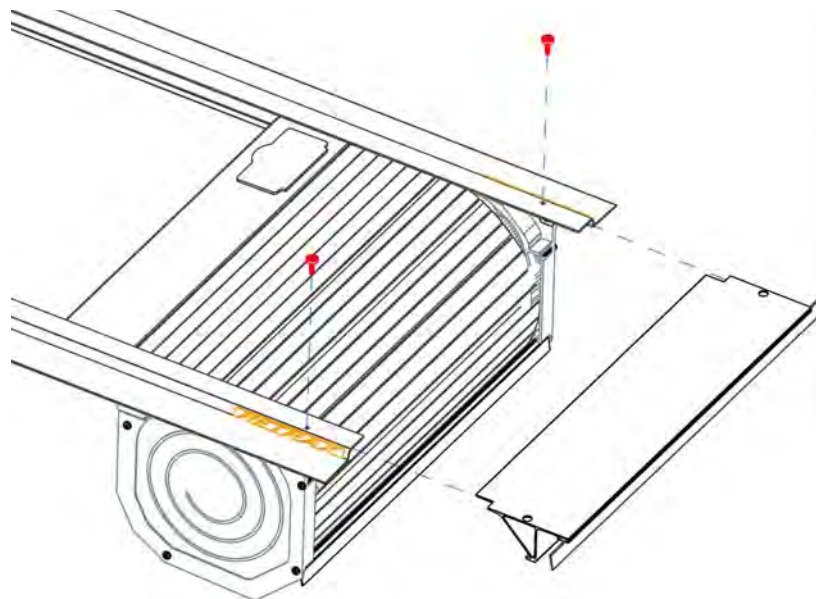
STEP 3 Install the drivers rail. Lift up the lock cover and open lock by pressing release button. Pull the cover out of the canister 6"-8" (**See PowertraxPRO Installation Supplement on how to move an electric cover**). **Caution: Be careful- the locking pin is sharp. DO NOT** allow cover to roll back into canister until rail is installed. Repeat to install the driver's rail.

SIDE VIEW OF FRONT COVER

STEP 4 Install the front cover. The front cover is attached below the rails. Hold the front cover level and push both ends in evenly to help slide it into place. When the holes are lined up, start threading the (2) **10-24 x 3/4" Allen head screws**. Tighten the 2 screws securely using the 1/8" Allen wrench. (included)



A latch is found on a Manual Cover Only. See PowertraxPRO Installation Supplement on how to move electric cover.

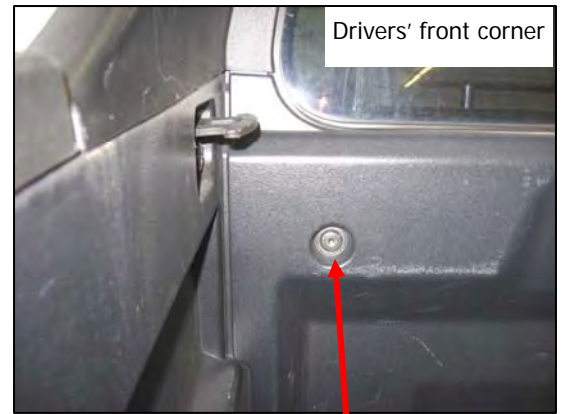


STEP 5 Attach front seal to rail. After the front cover is installed, remove the adhesive backing paper from under the front of both rails. (Fig. 5a) Push the front seal firmly into place over the adhesive keeping the seal even. (Fig. 5b)

Fig. 5a Bottom view passenger side



Fig. 5b Bottom view of rail and front cover with front seal installed



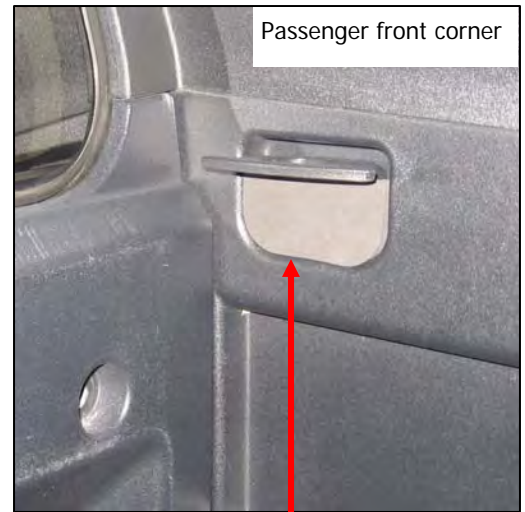
Drivers' front corner

STEP 6 Remove the factory bolts from both corners of the front wall of the bed. Use #40 Torx bit. (included)



Drivers' rear corner

STEP 7 Remove factory screws and spacers from both rear posts using #40 Torx bit. Drivers' rear corner is shown.



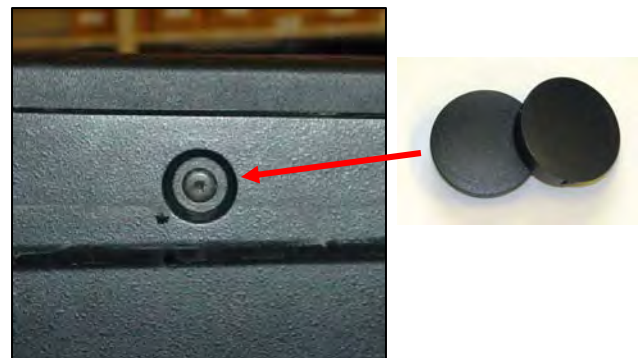
Passenger front corner

STEP 8 Remove the adhesive backing paper from the foam fillers for the tie-downs. Push into place over the tie-down bolts. Repeat on drivers side.



Drivers' front corner

STEP 9 Install front mount brackets as shown. Slide lock washer onto M6 x 40mm bolt, push bolt through hole in mount bracket and start threading into front holes in the bed. **Hold mount bracket level** and tighten using the 4 mm Allen wrench. (included) Repeat on passenger side.



STEP 10 Insert black plastic plugs into middle holes. Push the 2 supplied plugs into the 2 middle factory holes on both sides of the bed.

STEP 11 Lift bed cover into place Using two people lift the bed cover at the front and 2 ft back and position into bed above the RETRAX front mount brackets. The bed cover goes below the factory tie-downs. Slide the cover against the front wall. **Fig. 11a**

STEP 11b The weather-strip on the front cover may need to be repositioned. **Fig. 11b**

STEP 12 The holes in the front cover should line up over the threaded holes in the front mount brackets. If needed, lift up slightly on the canister and push the bed cover firmly against the front wall of the bed. Start the (2) 10/24 x 1" front mounting screws with black caps into the brackets but **do not tighten yet**. **Fig. 12**



Fig. 11a Lift cover into place over front mount brackets.



Fig. 11b Position front covers weather-strip.

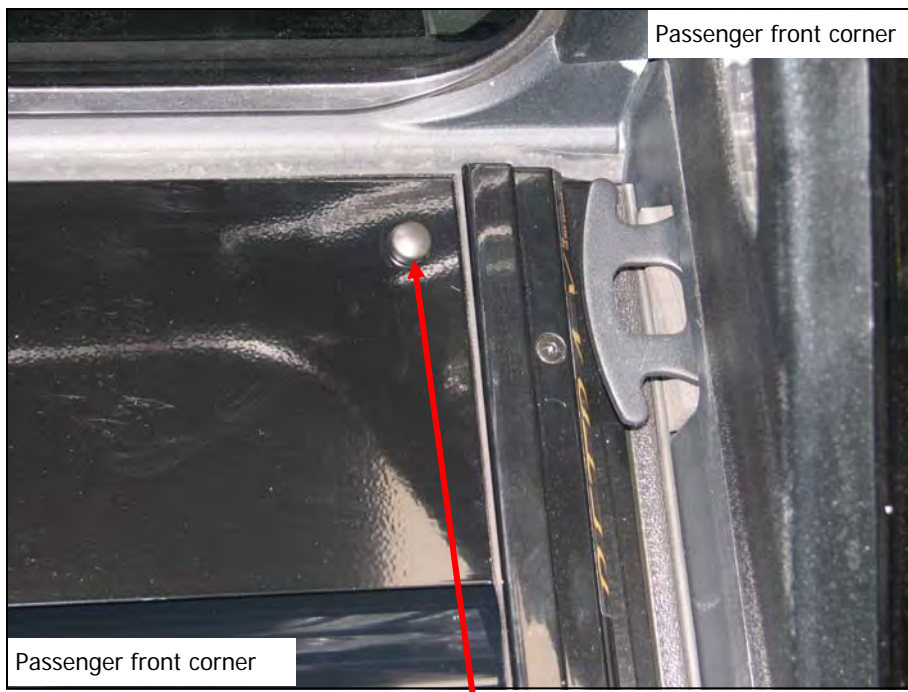
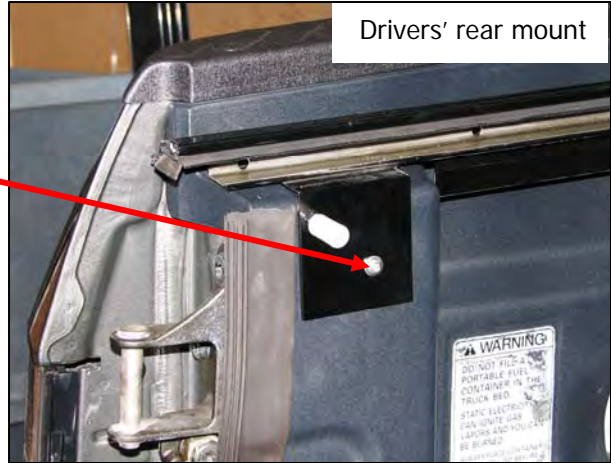


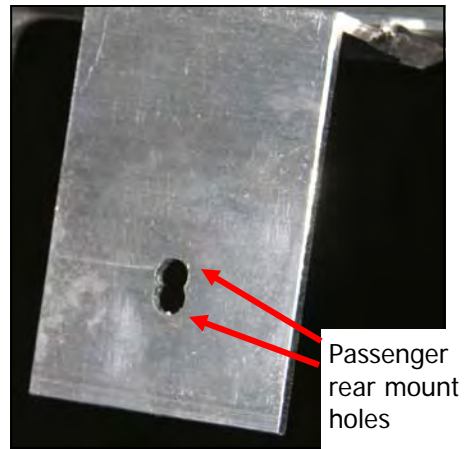
Fig. 12 Start threading the 2 front mounting screws w/black caps through the front cover into the front mount brackets. Do not tighten yet. When all 4 mounting screws are started then tighten front screws using a #2 Phillips screwdriver. Fasten screw cover when finished.

Step 13 Start rear mounting screws

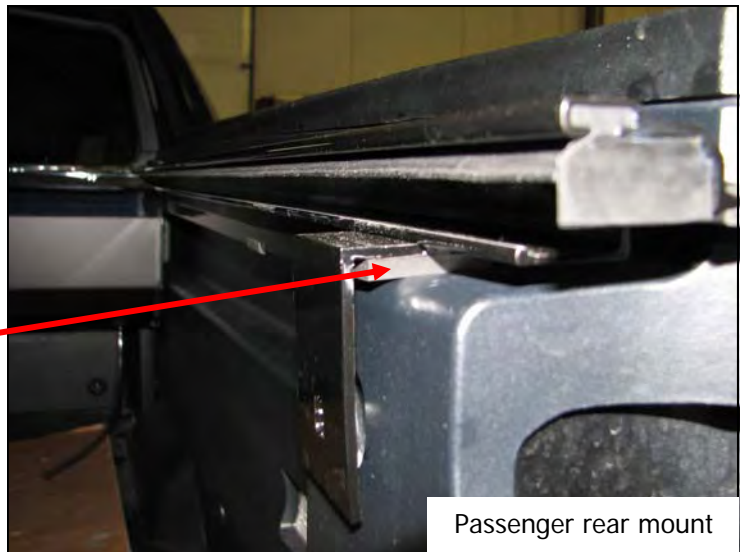
Slide a flat washer onto the (2) M6 x 40mm (metric) rear mount bolts, insert bolts through holes in rear rail brackets, then insert nylon spacer and start threading into factory holes at rear. Use 4mm Allen wrench. See Step 13a and 13b for passenger rear mount. **Tighten all 4 mounting screws securely** after all 4 screws have been started.



Step 13a Select proper mounting hole location on passenger rear mount plate. The hole used depends on if the rubber spacer is needed (see below). Most 2008 and older beds use the upper holes without the spacer. During the 2008 model year the passenger side of the Honda tailgate was raised slightly. The late 2008 and newer models use the lower hole and the rubber spacer. This is needed for clearance over the tailgate.



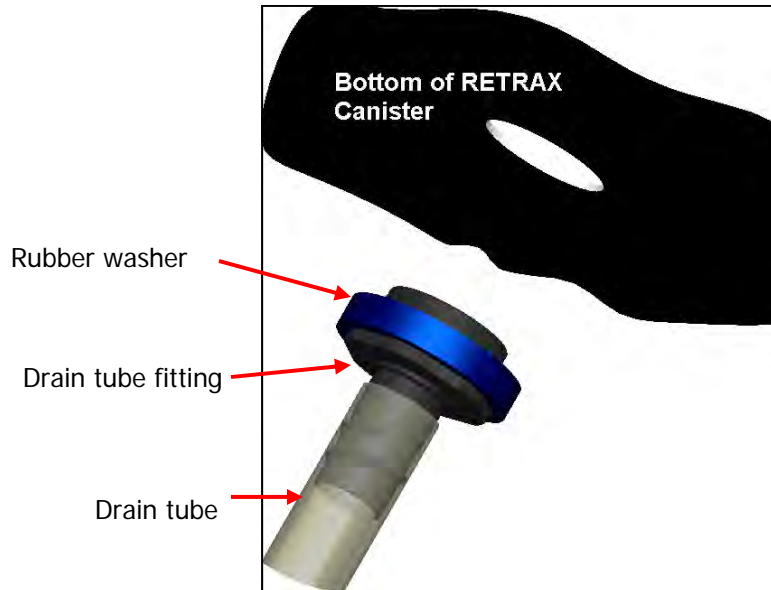
Peel off adhesive strip from rubber spacer and attach spacer underneath mount bracket as shown.



Step 13a The rubber spacer provided can be added underneath passenger rear mount bracket for proper clearance over factory tailgate protector.

STEP 14 Drain Tube

Assembly Remove plastic film from the canister. Place the rubber washers over the drain tube fittings. Push the assembled tubes into the 2 holes on the bottom of the canister. The fitting should lock into place; test by pulling down on the fitting, it should not pull out of canister.



STEP 15 Install drain tubes and cut to fit.

You can pass the tubes through the 2 factory plastic bed bolt covers. **Fig. 15a** Remove the covers and drill a loose 1/2" hole or a 9/16" hole for the tubes. Offset the holes as shown.

Fig. 15b

Water will drain around the factory bolts.



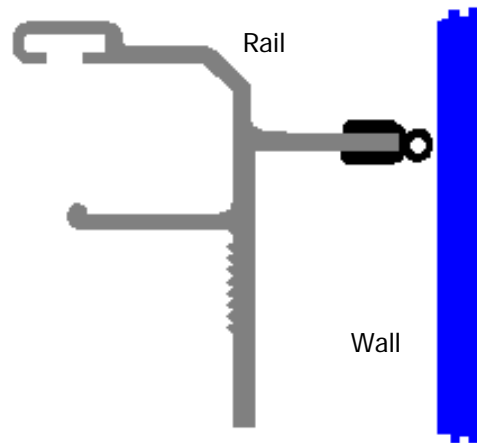
Fig. 15a Drivers' front corner – drain tube installed through plastic bed bolt covers.



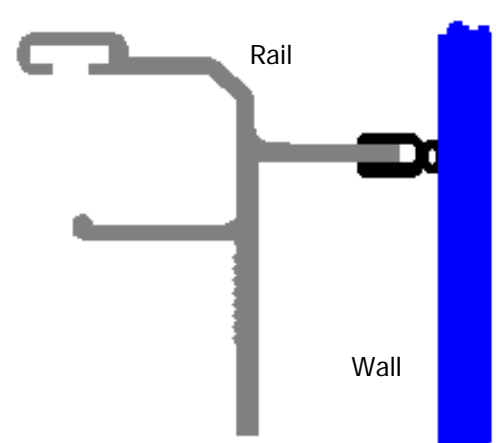
Fig. 15b Plastic bed bolt covers (Drilled)

Optional Rail Weather Strip Adjustment

The inside walls of the Ridge-line bed have a slight bow outward from front to back. This can cause a slight gap (Fig. a) between the rail weather strip and the side wall of the bed. The rail weather strip can be moved towards the bed wall if needed. Push (slide) the weather strip firmly against the wall to close the gap. (Fig. b)



Rearview passenger side rail
Fig. a



Rearview passenger side rail
Fig. b

RetraxPRO MAINTENANCE AND USE INSTRUCTIONS

USE

The Retrax cover has superior quality, rail weather-strip seals. These seals help minimize water intrusion into the pickup bed. The initial break-in period for the rail weather-strip is about 48 hours in the fully closed position. Your cover may be slightly harder to open and close during the break-in period.

Opening and Using the Cover

Using your **RetraxPRO** cover is as simple as opening the lock cover and pressing the button at the center of the latch to pop open the handle (1). If properly installed, the cover should be able to roll open and closed easily with one hand (2). During the break-in period more effort may be needed, but you still should be able to roll the cover open and closed with one hand.



Closing and Locking the Cover

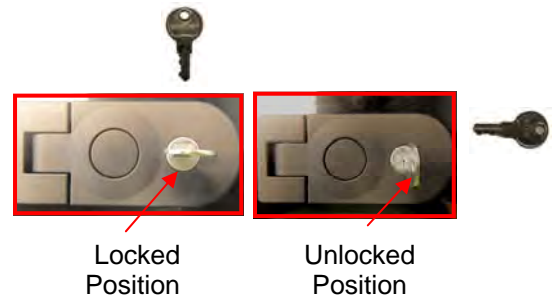
To latch your **RetraxPRO** cover anywhere along the rail, push down firmly on the end of the lock handle using both thumbs (3). It takes this amount of force because it is a friction lock in any open position. The **RetraxPRO** cover is easier to latch in the fully closed position due to a recess in the rail.



The teeth of the **RETRAX™** keys always face out

Securing Loose Cargo

RetraxPRO covers make transporting loose and large pieces of cargo safe and secure; a unique feature that most tonneau covers cannot claim. To secure any item too big to fit under the cover, latch the lock handle shut against the item to help keep it in place (4).



MAINTENANCE & CARE

Cleaning and Caring for Your Cover

Treat your **RetraxPRO** cover like you would treat the hood of your truck; you can wash and wax your cover like you would your pickup. The weatherstripping on your cover may absorb soapy residue from a car wash, so we recommend wiping down the inside of your rails from time to time (5).

Important:

NEVER spray any lubricant or cleaner in the rails. This will void your warranty. The ball bearings are sealed and will not need any sort of lubricant or spray.



*RETRAX*PRO™

The Last Bed Cover You'll Buy

Warranty Statement

Applied Products, Inc. (referred to as manufacturer) warrants each new RetraxPRO retractable pickup bed cover to the original owner as follows:

The RetraxPRO has a limited lifetime warranty for the failure of materials and workmanship. Warranty replacement costs will be prorated after three (3) years.

Items not covered under the warranty:

- Normal wear over the life of the RetraxPRO
- Water intrusion at any location or any damage caused as a result
- Other dealer and/or purchaser installed parts & accessories

Conditions which will void all warranty:

- Lubrication of the rails or sealed ball bearings
- Altering the RetraxPRO in any manner without written approval from the manufacturer
- Use for any purpose other than the normal intended use
- Misuse, negligence or accident
- Installation of any other part or accessory which comes in contact with or may interfere with the RetraxPRO without written approval of the manufacturer
- Failure to register this warranty with the manufacturer within thirty (30) days from the date of delivery
- Failure to adequately secure cargo to prevent damage to the RetraxPRO
- Acts of God or other external causes

Conditions and Limitations

This warranty is subject to certain conditions and limitations including, but not limited to, the following:

- Any part of a RetraxPRO retractable pickup bed cover that is found to be defective under the terms of this warranty will be repaired or replaced using either new or reconditioned parts at the discretion of the manufacturer.
- In determining what constitutes a failure under the terms of this warranty the decision of the manufacturer will be final.
- This warranty is applicable to the original purchaser only and is not transferable to subsequent purchasers.
- The manufacturer does not accept any responsibility in connection with the installation of any of its products by its dealers or agents.

- The manufacturer does not undertake responsibility to any purchaser for warranty express or implied by any of its dealers, distributors or agents beyond which is contained herein.
- Without regard to an alleged defect of its products the manufacturer under any circumstances does not assume responsibility for loss of time, inconvenience, revenue, or other consequential damage including, but not limited to, expenses for telephone, food, lodging, travel, loss or damage to the vehicle the products are installed on or loss or damage to personal property of the purchaser or user of the products.
- The manufacturer reserves the right to make changes in the design of, improvements to, or warranty of its products without imposing any obligation upon itself to provide the same for any products theretofore manufactured.
- Under no circumstances shall Applied Products, Inc. be liable for special, indirect, incidental or consequential damages sustained in connection with the RetraxPRO cover

Some states do not allow limitations on how long the implied warranty lasts, so the aforementioned limitations may not apply to you.

Claim Procedure

If a part fails, the purchaser should return to the selling dealer to determine if the failed part is covered under the terms of this warranty. If a warranty claim is necessary, the dealer will contact Applied Products, Inc. If it is impractical for the purchaser to return to the selling dealer, then the purchaser may contact Applied Products, Inc. directly at 1-800-206-4070. The defective part, along with a copy of the original bill of sale, must be returned prepaid to Applied Products, Inc. at 917 S. 46th St. Grand Forks, ND 58201. At the manufacturer's discretion, photos, a copy of the original bill of sale and the serial number may be submitted in lieu of the returned damaged product to Applied Products, Inc. After determining the validity of the warranty claim, Applied Products, Inc. will ship a replacement part prepaid to the customer. Labor costs to replace defective parts are the responsibility of the purchaser.

If at any time you need warranty assistance, please call 1-800-206-4070 or email us at retrax@retrax.com and one of our technical reps will be happy to help you. When calling or emailing, please be prepared to reference your part number and serial number.

An Employee Owned Company

RetraxPRO— Manufactured by Applied Products, Inc., 917 S 46th St., Grand Forks, ND 58201
www.retrax.com—800-206-4070—(701)746-5596—FAX (701) 746-5598



Made in the USA



Applied Products, Inc.

917 S. 46th St.
Grand Forks, ND 58201
Tel: 701-746-5596
Toll Free: 800-206-4070
Fax: 701-746-5598
Web: www.retrax.com



**Made in the USA by
An Employee Owned Company**